

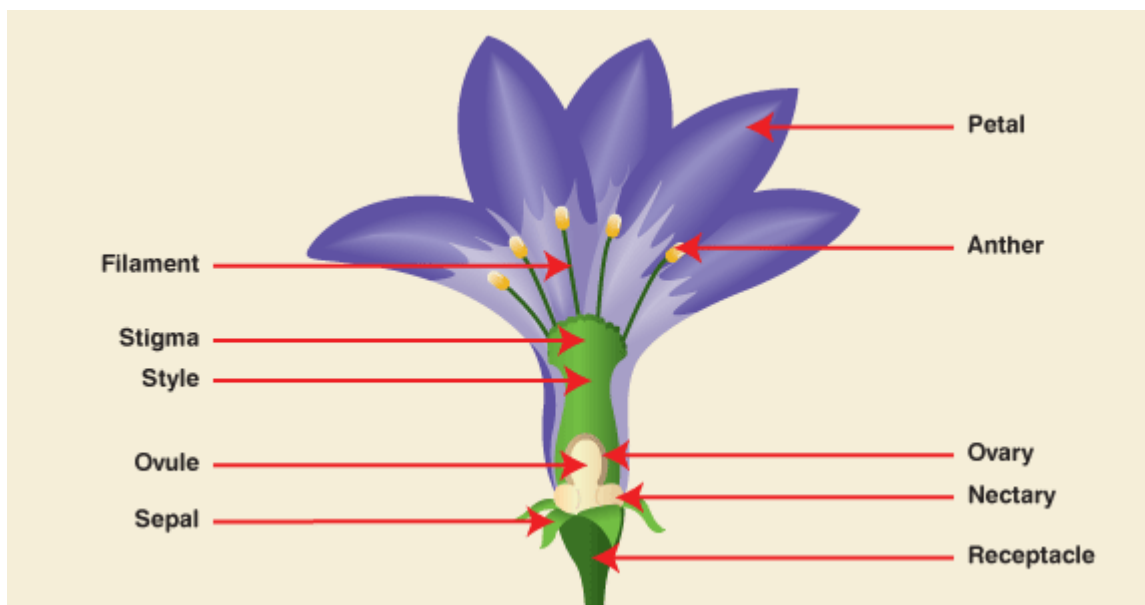
L.O. To understand the reproductive parts of a flower.	What I think	What my teacher thinks
Remember to/that:		
A flower's purpose is to attract pollinators.	<input type="radio"/>	<input type="radio"/>
A flower contains both male and female reproductive parts.	<input type="radio"/>	<input type="radio"/>
The male parts of the flower are called the stamen.	<input type="radio"/>	<input type="radio"/>
The female parts of the flower are called the carpel.	<input type="radio"/>	<input type="radio"/>
Pollination occurs when pollen lands on the stigma.	<input type="radio"/>	<input type="radio"/>
Fertilisation occurs when pollen fertilises an ovule.	<input type="radio"/>	<input type="radio"/>
Accurately label a diagram of a flower.	<input type="radio"/>	<input type="radio"/>

<https://www.youtube.com/watch?v=nTVOH8-xb1I>

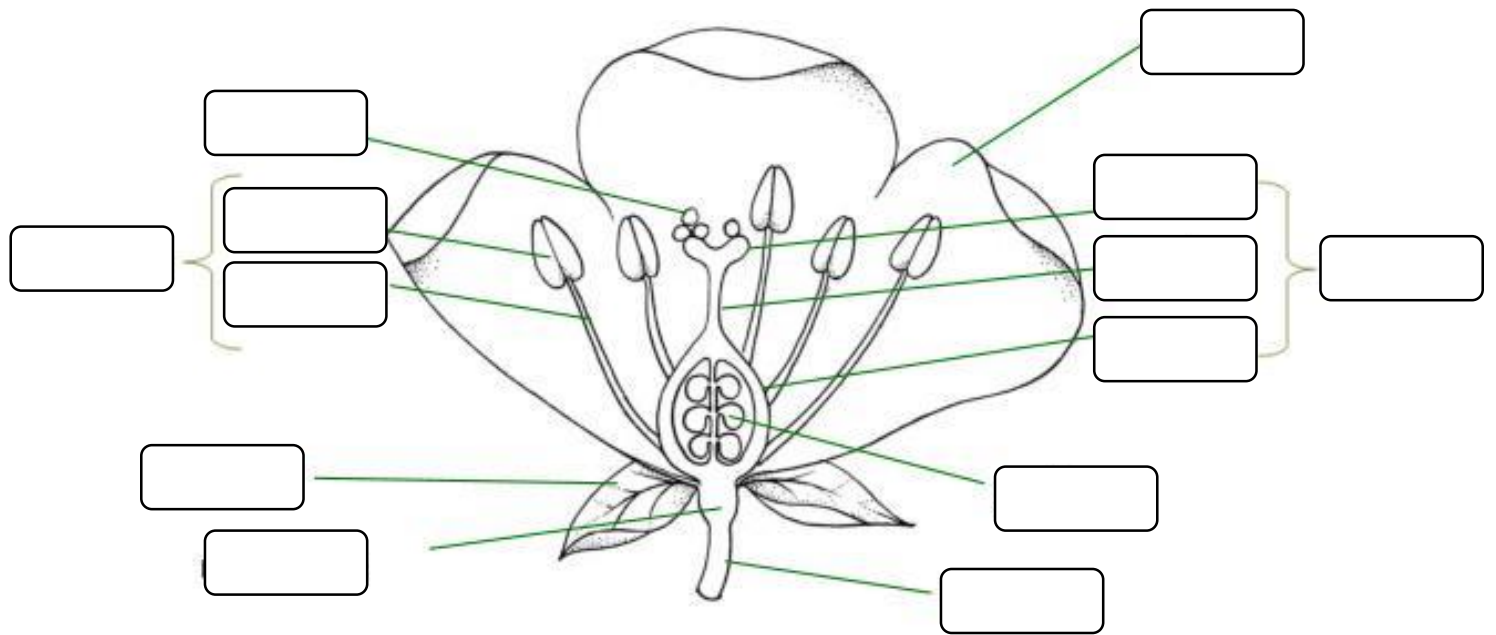
As we discovered from our work on the lifecycle of a flowering plant, the flower contains the male and female reproductive parts of the plant and its purpose is to attract pollinators. It does this by providing food in the form of nectar and being either brightly coloured or strongly scented, or both.

Sometimes pollination can occur through pollen being dispersed by the wind, but a more common method is through small animals, such as bees and butterflies.

Whilst there are some differences between types of flower, most follow this general model;



Your task is to either draw your own labelled diagram, or use the sketch over the page and fill in the gaps. Note that on the sketch above, the collective names for the male and female parts are not shown, but they are included on the sketch over the page.



pollen anther filament sepal receptacle stamen
 stem ovule ovary style stigma carpel petal

The reproductive parts of a flower.

